

# THE CU'S NEWS

**Win \$100**

Find your Account Number hidden in this Newsletter, call the Credit Union, and if you have an active Atlantic Federal Checking Account you'll receive \$100. Otherwise, you'll receive \$25 into your Savings.

The Quarterly Newsletter for Members of the Atlantic Federal Credit Union

Summer 2004

## You Should Have Zero Interest in Zero Interest Financing!

**O**% financing advertised by car dealers is not necessarily a big bargain. That's because 0% financing is usually *in lieu* of a rebate. Take the rebate instead and finance at Atlantic Federal. See what happens:

### 36 Month Car Loan /\$20,000

	Atlantic Federal Credit Union	Car Dealer
Interest Rate . . . . .	3.5%*	0%
Manufacturer's Rebate . . . . .	\$ 2,500	\$ 0
Amount to Finance . . . . .	\$17,500	\$20,000
3-Year Total Interest Paid \$ . . . . .	961	\$ 0
Total Payments . . . . .	\$18,461	\$20,000

### Atlantic Federal Saves You \$1,539!

Finance up to 125% of your new vehicle at Atlantic Federal. Also, the Credit Union refinances non-Credit Union loans!

Ask about Payment Advantage® the Credit Union's lease-like alternative.

Apply now at [www.atlfedcu.com](http://www.atlfedcu.com).

Or, call 1-800-222-1329.

\*Rate & financing shown offered to Premier Members up to a 3 year term. Other rates & terms available based on certain credit worthiness criteria.



## Getaway Giveaway

Bring Family & Co-workers Into the Credit Union & You Could Win a Free Vacation at One of Over 400 Marriott Fairfield Inns



**R**ecruit family and co-workers to join Atlantic Federal Credit Union and you could win a free 4 day/3 night stay at a Marriott® Fairfield Inn. Choose your getaway trip anytime during the next year with no black out dates.

This is a win-win for you, your family and co-workers. They'll appreciate the opportunity to join a Credit Union and you'll have a chance to win an exciting Marriott hotel stay.



**Bring Your Family Into the Winner's Circle at Atlantic Federal**

Here's how it works: With each new Member you recruit, your name will be entered into the drawing. The more Members you recruit, the greater your chances of winning the sweepstakes. It's that simple! And the new recruited Members will be entered into a separate drawing for a free vacation too.

Return the coupon below with the names of relatives or co-workers who you'd like to see join Atlantic Federal. Or, register them on the Credit Union's website at [www.atlfedcu.com](http://www.atlfedcu.com). The Credit Union will send your referral a membership package. Deadline for referral entries is Oct. 29, 2004.

### New Member Referral Coupon

Please print. Photocopy for more names.

Name of Person You're Referring \_\_\_\_\_

Their Mailing Address \_\_\_\_\_

City \_\_\_\_\_ State \_\_\_\_\_ ZIP \_\_\_\_\_

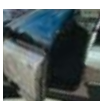
Your Name \_\_\_\_\_

Your Credit Union Account # \_\_\_\_\_ / Your Phone # \_\_\_\_\_

Return to: Atlantic Federal Credit Union  
37 Market Street Kenilworth, NJ 07033  
Or, fax to: (908) 245-0680 /Or submit at: [www.atlfedcu.com](http://www.atlfedcu.com)

Who's eligible for Atlantic Federal Membership? Family members including spouse, children, siblings, parents, grandparents & grandchildren. Anyone living in your household (even if unrelated.) Also, your co-workers at companies within Atlantic Federal's field of membership may join.

Employees and officials of Atlantic Federal Credit Union and their families are not eligible to enter giveaway drawing. Specifics of the hotel packages are available at the Credit Union.



ATLANTIC FEDERAL CREDIT UNION  
OPENING DOORS



## GET READY FOR the COLD WHILE IT'S HOT

**Credit Union Home Equity  
Rates Still at Record Lows**

As low as **4%**  
apr\*



**S**ummer is the best time to make home improvements. And the best way to finance is with a Credit Union Home Equity Loan. Borrow up to 100% of the equity in your home. Refinance 60010750 loans from other lenders at the same low rate.



**U**se a Home Equity for lots of other reasons, too, like a new or used 4-wheel drive vehicle, debt consolidation or taxes. However you use your loan, you'll...

**Get the Biggest Allowable Tax  
Deductions for Interest Payments**

Consult your tax advisor about tax deductibility. \*Annual percentage rate. Based on 80% loan to value. Other rates for higher loan values. Variable rate based on the prime rate plus or minus a margin which is determined depending on loan to value & adjusted semi-annually as the prime rate changes. Loans limited to NJ and PA owner occupied 1-2 family dwellings.

## NEW, CLOSER COURSE for '04

### 8th Annual Credit Union Scholarship Golf Outing

to raise funds for the Credit Union's annual college scholarship awards.

All Atlantic Federal Members and their guests are invited to play.

Any number of players may register, even singles, we'll put you in a foursome.

**Gambler Ridge Golf Club, Cream Ridge, N.J.** ext. 7A, NJ Turnpike

**Thursday, August 12/Shotgun start at 1 pm**

**\$100 per golfer. Includes: 18 holes of golf,  
cart rental, prizes, lunch & buffet dinner.**

To reserve your spot, call 1-800-222-1329, ext. 509.



## SUPPORT YOUR NOT-for-PROFIT CREDIT UNION

**E**nclosed with this month's statement is a response card that we're asking you to use to voice your opposition to proposed hearings to be held by the House of Representatives Ways and Means Committee to discuss changing the tax exempt status of the nation's Credit Unions.

Unlike a bank, your Credit Union is a not-for-profit cooperative. All of its excess income belongs to you, the Member, and you pay taxes on the money when you receive it as dividends, etc. Taxing the Credit Union, too, would be taxing the same dollars twice...*double taxation!*

Like Credit Unions, banks *do not* pay taxes on money they pay out as interest

to depositors. For them, that's a deductible cost of doing business. Banks *do* pay taxes, however, on *profits* they earn and divide amongst their private investors. In a Credit Union, there are no private investors earning profits. Hence the Credit Union's not-for-profit status.

Banks are actively lobbying Congress to repeal tax exempt status from Credit Unions in order to give themselves an obvious competitive boost. Banks claim that the Credit Union's tax exempt status is unfair, yet there isn't a bank in this country that has ever converted into a Credit Union, which they could do providing they forgo their profits.

**P**lease help us fight the bank lobby and protect your right to belong to a *not-for-profit* Credit Union. Help us fight double taxation of *your* money. Send in the response card. Or, go online at [www.capwiz.com/njcul/state/main/?state=NJ](http://www.capwiz.com/njcul/state/main/?state=NJ).



ATLANTIC FEDERAL  
CREDIT UNION

O P E N I N G D O O R S



## CD'S to MEET YOUR NEEDS

**Y**ou're probably already aware that Atlantic Federal offers Certificate of Deposit Accounts. These federally insured CD's feature:

- **Premium Dividend Rates**
- **Minimum Deposits Starting at \$250**
- **Flexible Terms from 90 Days to 5 Years**

You may not be aware, however, of the:

### One-Year Rate Riser Certificate

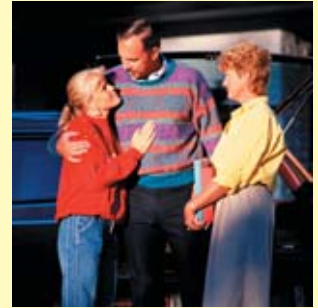
**W**ith a Rate Riser Certificate, if rates go up during the term of the CD, you can add to it and extend the term by 12 months at the new, higher rate.\*

For current rates or an application call 1-800-222-1329, option 4. To open a CD on-line, go to [www.atlfedcu.com](http://www.atlfedcu.com) and click on "Investment Services."

\*\$10,000 minimum initial deposit, \$10,000 minimum additional rate riser deposit. One rate riser deposit permitted per certificate.

## Student Survival Kit

**I**f your student is headed to campus this fall, make sure he or she takes along Atlantic Federal's **Student Account**. Whether it's purchasing textbooks or dorm necessities, the Credit Union's Student Account makes managing money much easier for your student.



Here's what's included in a Student Account:

- ✓ Free Checking with no monthly fees or minimum balance requirements.
- ✓ Free MasterMoney® Debit / ATM card.
- ✓ Free Online Banking to view balances, monitor accounts, transfer funds.
- ✓ Optional Bill Payer.\*
- ✓ Secured VISA® with online access to view account and make payments.
- ✓ E-statements so you don't need to depend on dorm mail.
- ✓ QuickDraw access – parents can use cross-member transfer to instantly transfer funds into their student's account to cover those unexpected expenses. (Parents must request this option.)

### Extra Bonus: Get a Free Tank of Gas...\*\*

...to cover the cost of coming home to visit Mom and Dad when a student age 17 to 22 opens a Checking Account, Debit Card and registers for free Online Banking before September 1, 2004.

\*After 3 months, Premier Members remain free. Enhanced Members pay \$2.95 per month. Value Members pay \$4.95 per month. Unlimited payments included. \*\*\$20 Exxon/Mobil gift card.

## FRONT DESK / BACK to SCHOOL

Use Your Credit Union Visa at Hotels & Resorts for Summer Vacation Expenses. Use It in Stores for Back-to-School Shopping!

**U**se a **new** Credit Union Visa Card for hotel accommodations, dining, shopping, travel and entertainment this summer. Use it in stores for school clothes and supplies. The interest rate on the new Visa Card is much lower than bank cards and department store charge accounts.



### Rate as low as 4.9% apr\*

- Rate applies to balance transfers & cash advances as well as purchases.
- Repay purchases within 25 days & pay no finance charge.
- No Annual Fee

\*For the first 6 months. Afterwards, the rate will be indexed to the Wall Street Journal prime rate plus a margin based on Member's credit history. Existing Visa cardholders: call the Credit Union to switch to the new, lower rate Visa.



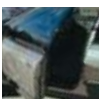
## 24-hour Online Banking is Always Free

Access your Atlantic Federal accounts on-line anytime from your computer.

- View up-to-the-minute balances & history information
- Transfer funds between accounts
- Print laser images of cleared checks
- Pay bills on-line with optional Bill Payer service. First 3 months are free.\*

Visit [www.atlfedcu.com](http://www.atlfedcu.com) for Online Banking, Bill Payer & E-statements.

\*After 3 months, Premier Members remain free. Enhanced Members pay \$2.95 per month. Value Members pay \$4.95 per month. Unlimited payments included.



ATLANTIC FEDERAL  
CREDIT UNION

OPENING DOORS



## More News You Can Use:

■ **Do We Have Your Current E-mail Address?** Send us the e-mail address you'd like us to use by going to [info@atlfedcu.com](mailto:info@atlfedcu.com). We'll keep you up-to-date on Credit Union news and announcements.



■ **Save for Next Year's Vacation. Open a Vacation Club Now.** (If you had one this year, you were automatically enrolled already.) We've made



a few changes to our Vacation Clubs:

- ✓ For 2004-05, clubs will run for 51 weeks.
- ✓ We've discontinued coupon books. You may simply use standard deposit slips with your club payments (we'll mail you a supply upon request). Easier yet, eliminate mail or in-person payments completely by switching to the automatic transfer method. If you don't currently have payroll or other automatic deposits coming in but would like to start, we'll help you get it set up.

To open a club, go to our website at [www.atlfedcu.com](http://www.atlfedcu.com) or call 1-800-222-1329.

■ **Are You Familiar with Courtesy Pay?** Courtesy Pay is the Credit Union's program of automatically paying a Premier or Enhanced Member's NSF (insufficient fund) checks and/or ACH debits up to \$500 or \$300 respectively for 15 days. Members avoid the embarrassment of bounced checks. (Note: Courtesy Pay is only activated after all other sources of funds, i.e. savings, overdraft line-of-credit, are used.)



■ **Need Some Help Researching Investments?** A new feature on our website lets you research investments, trade stocks on-line, buy mutual funds and more! Go to [www.atlfedcu.com](http://www.atlfedcu.com) and click on the "My Financial Center" icon at the bottom of the home 716230 page.

■ **Who is Watching Out for You?** The Supervisory Committee is the member's watchdog. You may contact them at: Atlantic Federal, Supervisory Committee, P.O. Box 83, Roselle Park, N.J. 07204 .

■ **Congratulations Scholarship Winners.** Your Credit Union awarded \$3,000 College Scholarships for 2004 to: Pamela C. Wilson, Ameer Parekh and Sudipta Bandyopadhyay.

## Newark News

Construction on Atlantic Federal's new, expanded downtown Newark branch is moving along. We now project a grand opening in August. We'll announce the Grand Opening celebration as the date gets nearer.

## Hidden Account Numbers: \$ Rewards

Find your Account Number in this issue of The CU's News & call: (908) 245-1750, ext. 512. \$25 will be added to your Share Savings Account. \$100 will be added if you have an active Checking Account.

## Holiday Closings:

- Monday, September 6 for Labor Day
- Monday, October 11 for Columbus Day



**ATLANTIC FEDERAL  
CREDIT UNION**  
OPENING DOORS



Phone: (908) 245-1750 / Fax: (908) 245-0680

**Kenilworth:** 37 Market Street  
Kenilworth, NJ 07033

Hours: M-F 8 am till 5 pm / Thurs. till 6:30 pm  
Sat. 9 am till Noon

**Newark:** 570 Broad St., Newark, NJ 07102  
(Opening late summer 2004)

**Princeton:** 29 Emmons Dr., Bldg. A-30  
Princeton, NJ 08540

Hours: M-F 8 am till 4 pm

**Elizabeth:** Trinitas Hospital -  
210 Williamson St. Elizabeth, NJ 07201

Hours: M-F / 9 am till 4 pm

Serving Only Verizon Wireless Employees:

**Bedminster:** 180 Washington Valley Rd. 3rd Flr.  
Bedminster NJ 07921

Hours: Tuesdays & Fridays 8:30 am till 4 pm

**Morristown:** 250 James St. Morristown NJ 07960

Hours: Mondays, Wednesdays & Thursdays 8:30 am till 4 pm

**Orangeburg:** 2000 Corporate Drive  
Orangeburg NY 10962

Hours: Monday - Friday 9:30 am till 2:30 pm

**Warren:** 30 Independence Blvd.  
Warren NJ 07059

Hours: Monday - Friday 8:30 am till 3 pm

■ **Web Site - [www.atlfedcu.com](http://www.atlfedcu.com)**

■ **E-mail for Member Service - [info@atlfedcu.com](mailto:info@atlfedcu.com)**

■ **E-mail for IRAs & CDs - [renee@atlfedcu.com](mailto:renee@atlfedcu.com)**

**Quick Draw - (908) 245-0404**

Or press 1 after calling the C.U.'s main number.